

A Project By

**M. KULKARNI BUILDERS  
& INFRASTRUCTURES PVT. LTD.**



# ALTAMOUNT



Experience the magic of  
**NEW BEGINNINGS**

**2 & 3 BHK LUXURIOUS FLATS**



 The elixir of life &  
LUXURY....



## 2 & 3 BHK LUXURIOUS FLATS

Located in the heart of Nagpur,

"MK ALTAMOUNT" brings to you a perfect blend of luxury and comfort.

Nestled with the finest amenities and plush ambience, this humble abode is the perfect gift you can give to you and your family.

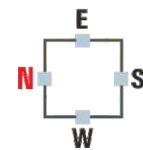
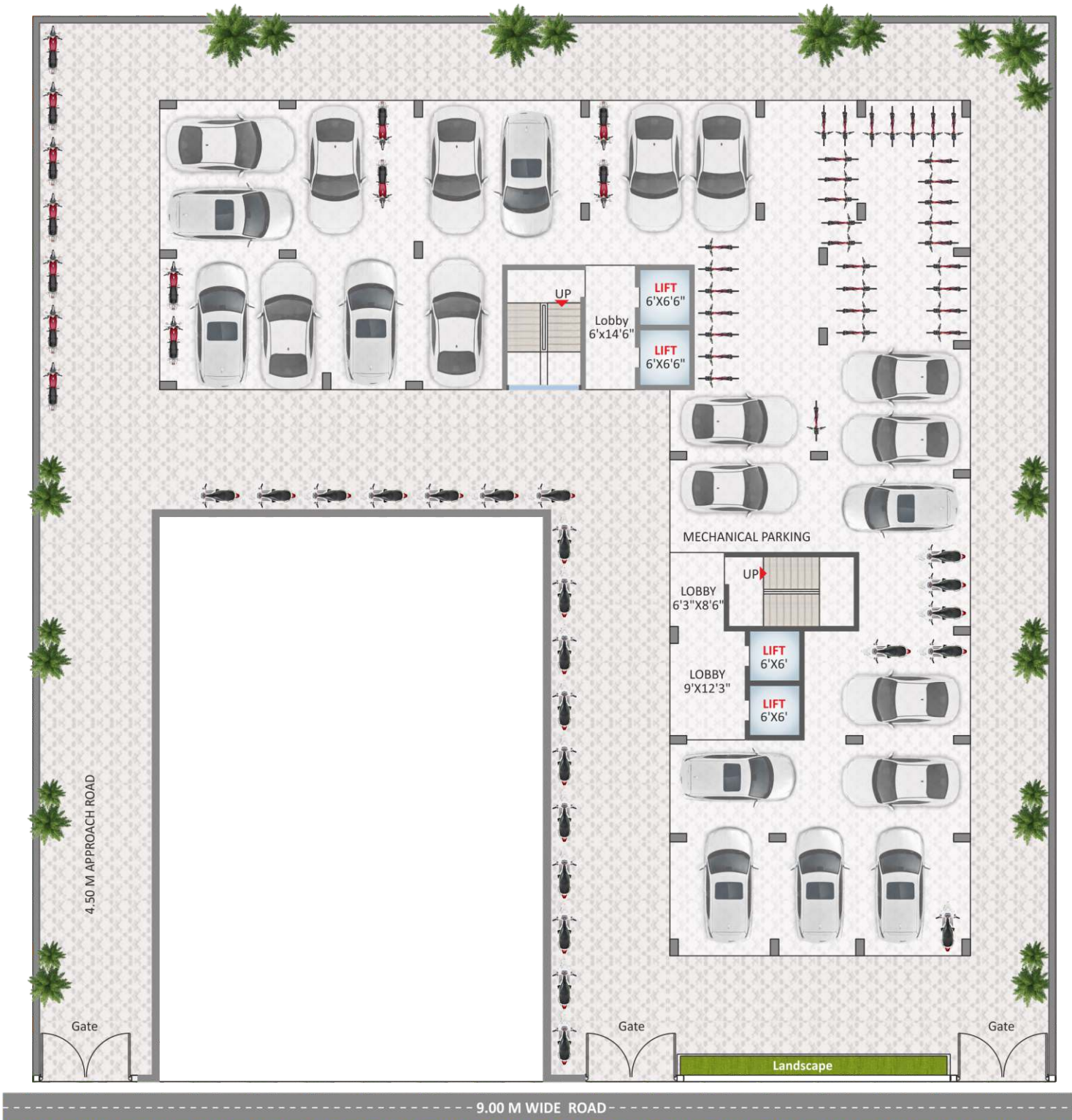
Coupled with state of the art technology and best in class architecture,

"MK ALTAMOUNT" is a name you can trust.





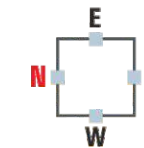
# AMPLE PARKING SPACE



**GROUND FLOOR PLAN**



# 2 & 3 BHK LUXURIOUS FLATS



**FIRST FLOOR PLAN**





















# 2 & 3 BHK LUXURIOUS FLATS



**TYPICAL FLOOR PLAN**  
(2nd / 3rd / 4th / 5th / 6th / 7th FLOOR)



## SPECIFICATION

-  **STRUCTURE**  
RCC framed structure.
-  **BRICK WORK**  
6" Thick Outer walls and 4" thick internal walls.
-  **PLASTERING**  
Internally smooth finish phanti plaster and externally sand faced.
-  **FLOORING**  
All rooms including Balconies with Premium vitrified tiles, Anti-skid Ceramic tiles flooring in Toilet. Passage and Staircase designed with Marble and Granite.
-  **DOORS**  
The Main Door is beautifully designed with a Teak Wood frame, Internal doors with Granite frame and laminated flush wood panels with brass fittings.
-  **WINDOWS**  
Superior Powder Coated Aluminum sliding windows, with Mosquito Mesh, Clear Glass and beautifully designed MS grills. Aluminum Ventilators in bathroom and WC.
-  **TOILETS**  
All Toilets beautifully designed with glazed wall tiles up to 7' height. Branded Jaguar or equivalent Sanitary Ware and Chrome Plated bathroom fittings.
-  **PAINT**  
Plastic Emulsion paint with full Putty in 2 coats to internal walls and ceiling, and Acrylic weather-shield paint for all exterior walls, grills enamel painted.
-  **KITCHEN OTTA**  
Granite top kitchen platform with steel sink, & Glaze Tiles up to 4' height above platform. Provision for installation of aqua-guard near kitchen sink, & only supportive structure for Modular Kitchen will be provided.
-  **ELECTRICAL**  
Concealed electric fitting with Branded Modular Switches. Provision for AC in bedrooms, & TV and Telephone connection in Hall and one Bedroom.
-  **WATER PROVISION**  
Ample Water available through corporations and bore well. Separate lines for drinking water and utility water from overhead tanks.
-  **LIFT**  
2 Branded Lifts with Power Backup.
-  **SOLAR WATER**  
Hot water supply through Solar Water Heaters of adequate Capacity will be installed on the Rooftop.
-  **AUTOMATION**  
Parking and peripheral (marginal spaces) areas will be under CCTV Surveillance. Video door Phones with EPABX system will be provided to each flat to control the access.
-  **PARKING**  
Ample Parking Space.
-  **RAIN WATER HARVESTING**  
Proper rain water harvesting arrangements.

### NOTE

- M.S.E.B meter deposit, transfer deposit, water meter charges
- registration charges, stamp duty, G.S.T. as per Govt. norms.
- Changes in the specification & extra item work charges to be paid in advance
- Elevation changes not allowed
- Documentation, legal charges & Govt. Taxes will be applicable as per prevailing rates
- Maintenance charges shall be borne by the purchaser



## PROJECT LOCATION

SITE :  
Near Axis Bank, Opp. Mohini Raj Apartments,  
Khare Town, Dharampeth, Nagpur.



A Project By

### M. KULKARNI BUILDERS & INFRASTRUCTURES PVT. LTD.

19, Central Excise Colony, Chhatrapati Square,  
Ring Road, Nagpur- 440015



FOR BOOKING CONTACT

+91 9172810135

+91 7122971945

ARCHITECT : Ar. Abhijit Asolkar

STRUCTURAL CONSULTANT : P Y Ghuse

LEGAL ADVISOR : Anant Luley